

Ezra's Overlook at Wawona in Yosemite
acrylic, 2009, 22 x 9 in.

Susan J. Klein

1717 Mova Street, Sarasota, Florida 34231

941.966.3542 / sjajklein@verizon.net

<http://www.susanjkleinart.com>

I am an American landscape artist who specializes in acrylic paintings of the wild and scenic from Florida to California.



Education

1977 MFA (Painting) Kent State University - Kent, Ohio

1972 BA (Studio Arts) Youngstown State University -
Youngstown, Ohio

Galleries

2010 currently represented by Allyn Gallup Galleries,
Sarasota, Florida

1993-2010 represented by Clayton Galleries, Tampa, Florida

1985-1986 director, Trumbull Art Guild, Warren, Ohio

1979-1983 gallery owner/director, Steel Street Experimental
Gallery, Youngstown, Ohio

Residencies, Workshops and Events

2019 Grand Canyon Celebration of Art, invited artist

2016 Sleeping Bear Dunes Natl. Lakeshore, Artist-in-Residence

2016 Grand Canyon Celebration of Art, invited artist

2015 Grand Canyon Celebration of Art, invited artist

2014 Great Basin National Park, Artist-in-Residence

2014 North Cascades National Park, Artist-in-Residence
2012 Everglades National Park, Artist-in-Residence
2012 Glen Canyon National Recreation Area, Artist-in-Residence
2011 Petrified Forest National Park, Artist-in-Residence
2011 Celebration of Art, *plein air* painting on the South Rim,
Grand Canyon Association, Grand Canyon National Park, AZ
2009 Grand Canyon National Park, South Rim,
Artist-in-Residence
2009 Yosemite National Park, Artist-in-Residence
2008 Acadia National Park, Artist-in-Residence
2007 Grand Canyon National Park, North Rim,
Artist-in-Residence
2005 Everglades National Park, Artist-in-Residence
2000 ArtStudy Giverny, Giverny, France
1982 *Dialogue* Art Criticism Workshop; scholarship, sponsored
by the Ohio Foundation on the Arts, Inc., and the Ohio
Arts Council

Solo Exhibitions

2011 *Colorado River Paintings*, Fire on the Mountain Gallery,
Flagstaff, Arizona
2006 *Sawgrass to Cypress: Painting the Everglades*, Ernest F.
Coe Visitor Center, Everglades National Park
2005 *Extraordinary Landscapes*, The Celery Barn Gallery,
Sarasota, Florida
2003 *Landscape as Muse: A Retrospective, 1981-2003*, Clayton
Galleries, Tampa, Florida
2003 Capitol Complex, Tallahassee, Florida
2000 *Landscapes*, Lee County Alliance for the Arts, Fort Myers,
Florida
1997 St. Petersburg Center for the Arts, St. Petersburg,
Florida
1994 *Landscapes*, Emphasis Gallery, Sarasota, Florida
1992 *Florida Landscapes*, ARTarget, Sarasota, Florida
1988 *Landscapes*, Trumbull Art Guild, Warren, Ohio
1984 *Landscape Through the Looking Glass*, Kilcawley Center Art
Gallery, Youngstown State University, Youngstown, Ohio
1984 *Landscapes*, Jewish Community Center, Youngstown, Ohio
1980 *Sensual Landscapes*, Steel Street Experimental Gallery,
Youngstown, Ohio.
1977 *Spatial Tensions Based on Cross Elements*, MFA Thesis
Show, Kent State University, Kent, Ohio

1974 The Hoyt Institute of Fine Arts, New Castle, PA

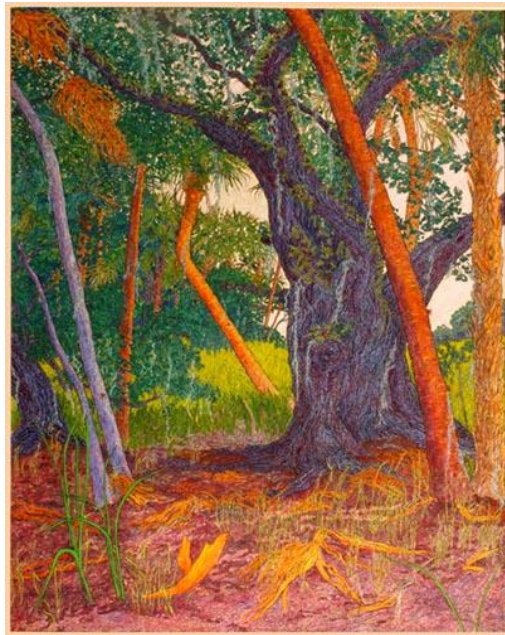


Myakka Prairie Sky, Myakka River State Park, acrylic, 2007, 19 x 48 in.

Group Exhibitions

- 2016 Annual Petticoat Painters Show, Art Center Sarasota
- 2016 *Ah, Wilderness*, Allyn Gallup Contemporary Art, Sarasota, FL
- 2016-2014 *A.I.R.I.E. Suitcase Show*, Galleri Schaeffers, Oslo, Norway (Aug-Sept 2014); The Tahawus Center in the Adirondacks (Aug 2015); The Puffin Foundation, Teaneck, NJ (Dec-Jan 2015-16); Coe Visitor Center, Everglades National Park (March 2016)
- 2015 Selected works from the Petrified Forest National Park Collection, Talon Gallery, Show Low, AZ
- 2015 Annual Petticoat Painters Show, Art and Frame, Sarasota, FL
- 2014 *Made in Sarasota*, Allyn Gallup Contemporary Art, Sarasota, FL
- 2014 Petticoat Painters' 60th Anniversary Show, Selby Gallery Ringling College of Art and Design, Sarasota, FL
- 2014 Yosemite Renaissance XXIX, Yosemite National Park
- 2013 Yosemite Renaissance XXVIII, Yosemite National Park
- 2013 40th Art Festival, Temple Beth-El, St. Petersburg, FL
- 2012 Petticoat Painters' 59th Anniversary Show, Sarasota, FL
- 2012 *Botanica*, Arroyo Galleries, Santa Fe, New Mexico
- 2012 *The Colorado, River of Possibilities*, Carl Hayden Visitor Center, Glen Canyon National Recreation Area, Page, AZ
- 2011 *11·11·11: Contemporary Southwest Realism*, Arroyo Gallery, Santa Fe, New Mexico
- 2011 *Petticoat Painters' 58th Anniversary Show*, Longboat Key Art Center, Sarasota, Florida
- 2011 *3RD ANNUAL CELEBRATION OF ART*, Kolb Studio, Grand Canyon

Association, Grand Canyon National Park, Arizona
2011 Yosemite Renaissance XXVI, Yosemite National Park,
February through May
2010 *In Sights*, 58th Petticoat Painters Annual, Art Center
Manatee, Bradenton, Florida
2010 *Florida by Floridians*, Allyn Gallup Gallery, Sarasota, FL
2010 *Native and Wild*, Art Center Manatee, Bradenton, Florida
2010 *Wild Myakka*, Myakka River State Park and Art Center
Sarasota, Sarasota, Florida
2010 *39th Annual Creators and Collectors Tour*, Sarasota Fine
Arts Society, Sarasota, Florida
1995-2009 Summer Galleries Exhibits, Clayton Galleries, Tampa,
Florida
2009 Area Artists Group Exhibit, Healthplex, Sarasota, Florida
2007-2008 *Artists-in-Residence of Grand Canyon, North Rim*;
Kolb Studio, Grand Canyon National Park
2006-2007 *Yosemite Renaissance XXI*, NPS Yosemite Museum
Gallery, Yosemite National Park (exhibit traveled 5/2006-
3/2007)
2006 *Large is Lovely*, Art Center Sarasota, Sarasota, Florida



Resurrection Fern, Myakka River State Park,
acrylic, 2006, 41x 31 in.

2004-2005 *The Road Less Taken*, Petticoat Painters Group
Exhibit, Center for Arts and Humanity, Sarasota, Florida

- 2003 *Group Invitational 2003: New Work*, The von Liebig Art Center, Naples, Florida
- 2002 *National Exhibit 2002*, Charlotte County Art Guild, Inc., Punta Gorda, Florida
- 2001 *2 + 1: An Invitational*, Art League of Manatee County, Bradenton, Florida
- 2001 *Women Contemporary Artists*, The Selby Gallery at Ringling School of Art, Sarasota, Florida (juror: Michael Milkovich)
- 2001 The Selby County Library 3rd Invitational Exhibit, Sarasota, Florida
- 2001-2004 Art Beth-El Festival Invitational, Temple Beth-El, St. Petersburg, Florida
- 2000-2009 *Petticoat Painters Annuals*, Various locations: The Celery Barn, Sarasota, Florida; The Selby Gallery at Ringling School of Art and Design, Sarasota, Florida; The Capitol Complex, Tallahassee, Florida; Art Center of Manatee, Bradenton, Florida. The Petticoat Painters is one of the longest continually exhibiting women artists' groups in the USA; limited to 20 members, it was founded in 1953 for the promotion of the work of professional women artists in Sarasota, Florida.
- 2000 Invitational Exhibit of Petticoat Painters, The Manatee Art League, Bradenton, Florida
- 2000 *Exhibit 2000*, National Oil and Acrylic Painters Society, Fulton, Missouri,
- 2000 *Paintings of Florida*, The Clayton Galleries, Tampa, Florida
- 1999, 2000 *Artistic Waters: A Florida Collectors Art Show* (invitational), The Florida Aquarium, Tampa, Florida
- 1998-2009 *Small Works*, The Clayton Galleries (annual), Tampa, Florida
- 1998 *47th Annual All Florida Juried Exhibition*, juried by Theodore F. Wolff, former critic for *The Christian Science Monitor*; Boca Raton Museum of Art, Boca Raton, Florida
- 1997 *Hilton Head Art League 1997 Juried Show*, The Self Family Arts Center, Hilton Head Island, South Carolina
- 1996-1998 *Hot Nights/Cool Art*, ARTarget, Sarasota County Arts Council, Sarasota, Florida
- 1995 *Florida Landscapes*, Donn Roll Galleries, Sarasota, Florida
- 1993 *Small Works Theme Show*, Barrier Island Group for the Arts, Sanibel, Florida

- 1993-2010 Summer Series I, II & III, The Clayton Galleries,
Tampa, Florida
- 1973, 1976, 1980, 1989 National Midyear Show, The Butler
Institute of American Art, Youngstown, Ohio
- 1986 *The Doll Show* (invitational), Kilcawley Center Art
Gallery, Youngstown State University, Youngstown, Ohio
- 1973-1985, 1988 The Area Artists Show, The Butler Institute of
American Art, Youngstown, Ohio
- 1980 installation sculpture, sponsored by the Downtown
Development Project in association with the College Art
Association Conference, New Orleans, LA
- 1980 Faculty Show, Davis Gallery, University of Akron, Akron,
Ohio
- 1979 Faculty Show (installation sculpture), Youngstown State
University, Youngstown, Ohio
- 1978 Ohio State Fair, Professional Fine Arts Show (juried by
Mary Miss and Richard Anuszkiewicz), Columbus, Ohio
- 1976 *Ohio Women Artists Past and Present*, The Butler Institute
of American Art, Youngstown, Ohio
- 1976 *All Ohio Painting and Sculpture Biennial*, The Dayton Art
Institute, Dayton, Ohio
- 1975 *All Ohio Fine Arts Show*, Massillon Museum, Massillon,
Ohio

Publications

- 2004 "The Florida Contemporary Crowd," *Florida International
Magazine*. October, p. 57
- 2004 *New American Paintings: Juried Exhibition in Print*.
Juried by Carrie Przybilla, curator, High Museum of Art,
Atlanta, GA. June/July, Number 52, pp. 118-121
- 2001 "Layered Colors/ Water Based Media," *Watercolor Magazine*.
Winter
- 1999 "Before The Fall." *Sarasota Arts and Entertainment*.
Volume 10. August cover
- 1999 *New American Paintings: Juried Exhibition in Print*.
Juried by Clare Bell, associate curator, Solomon R.
Guggenheim Museum, NYC. June/July, Number 22, pp. 92-95
- 1999 Libby, Gary R. *Coast to Coast: The Contemporary Landscape
in Florida*. Daytona Beach, FL: The Museum of Arts and
Sciences; pp. 74-75
- 1993 Cover design, *Sarasota Arts Review*, April



Imminent Depth, Grand Canyon, North Rim,
acrylic, 2008, 41 × 31 in.

Recognitions and Awards

- 2015 First place, Women Contemporary Artists Annual, juried, Selby Gallery, Ringling College of Art and Design, Sarasota, FL
- 2014 Best of Show, Artists Guild of Anna Maria Island, *An Open All-Media Juried Art Show*, The Studio at Gulf and Pine, Anna Maria, Florida
- 2008–2010 State Department Art-in-Embassies Program, "Resurrection Fern," American Embassy in Sofia, Bulgaria (Ambassador Nancy McEldowney)
- 2004 painting award, Art Festival Beth-El, St. Petersburg, Florida
- 2002–2004 State Department Art-in-Embassies Program, "Clay Gully Creek," American Embassy in Rome, Italy (Ambassador Mel Sembler)
- 2002 painting purchase award, Art Festival Beth-El, Temple Beth-El, St. Petersburg, Florida
- 2001 painting award, Women Contemporary Artists, Unity Gallery, Sarasota, Florida
- 2001 inducted into the Florida Artists Group, Area III
- 2001 painting award, Art Encounter 2000 All Florida, Naples Von Liebig Center (juror: Mark Ormond)

2000 painting award, *12 x 12 Members Show*, The Art Center, St. Petersburg, Florida
1999 painting award, Women Contemporary Artists Exhibit, Longboat Key Art Center
1998-2000 *Coast to Coast: The Contemporary Florida Landscape*. Selections from the Geiger-Percy Collection, a traveling exhibit touring nine Florida museums
1988 invited juror, The Northeastern Ohio Regional Scholastic Art Awards
1983-1987 painting awards YWCA Juried Women Artists Shows, Youngstown, Ohio
1981 drawing award, 24th Trumbull Art Guild Annual, Warren, Ohio
1979 sculpture award (installation), *The Lunch Party: Isolation*, Ohio State Fair, Professional Fine Arts Show (jurors: Duane Hansen, Philip Pearlstein, and Rose Silfka)

Public Collections

Acadia National Park, Bar Harbor, Maine
Yosemite National Park, Yosemite Renaissance, California
Grand Canyon Association, Grand Canyon National Park, Arizona
Everglades National Park, Homestead, Florida
Great Basin National Park, Nevada
North Cascades National Park, Stehekin, Washington
Petrified Forest/Painted Desert National Park, Arizona
Sleeping Bear Dunes National Lakeshore, Empire, Michigan
Glen Canyon National Recreation Area, Arizona
Tampa General Hospital, Tampa, Florida
William Hough and Company, St. Petersburg, Florida
Hillsborough County Commissioners, Public Art Collection, Tampa, Florida
The Hoyt Institute of Fine Arts, New Castle, Pennsylvania
Youngstown State University, Youngstown, Ohio
Kent State University, Kent, Ohio
Geiger-Percy Collection, Tallahassee, Florida



Pa Hay Okee Orange, Everglades National Park, acrylic, 2005, 19 x 49 in.